

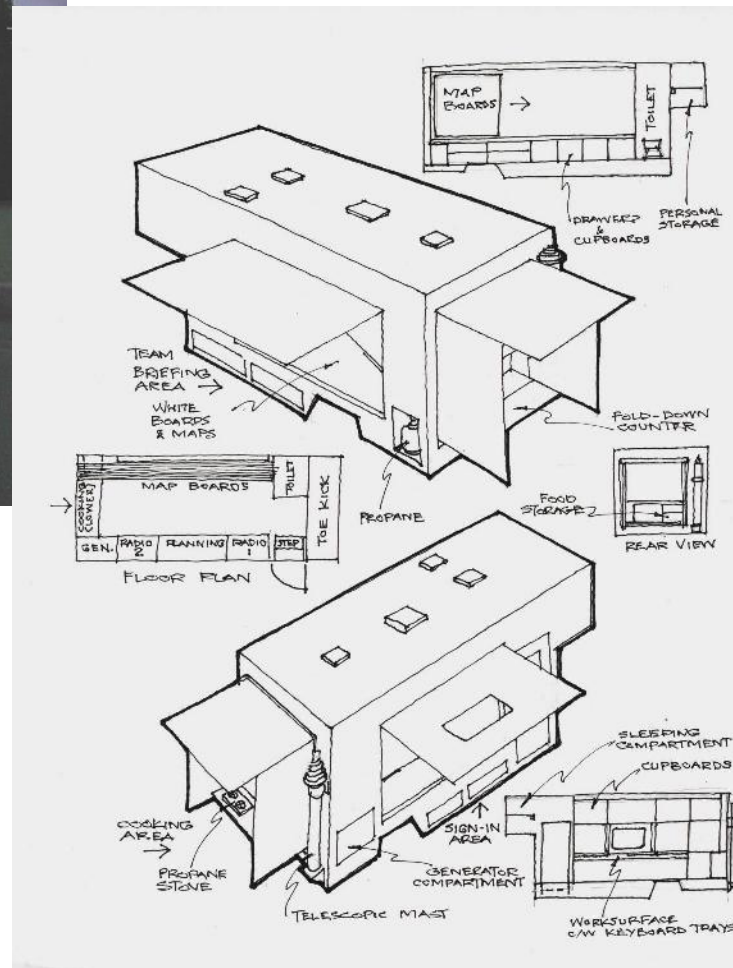
# SAR COMMAND VEHICLE AND TRAILER DESIGNS



**INTERCONTINENTAL  
TRUCK BODY**

**NEIL BREWER**  
AUGUST 2015

# IN THE BEGINNING . . .

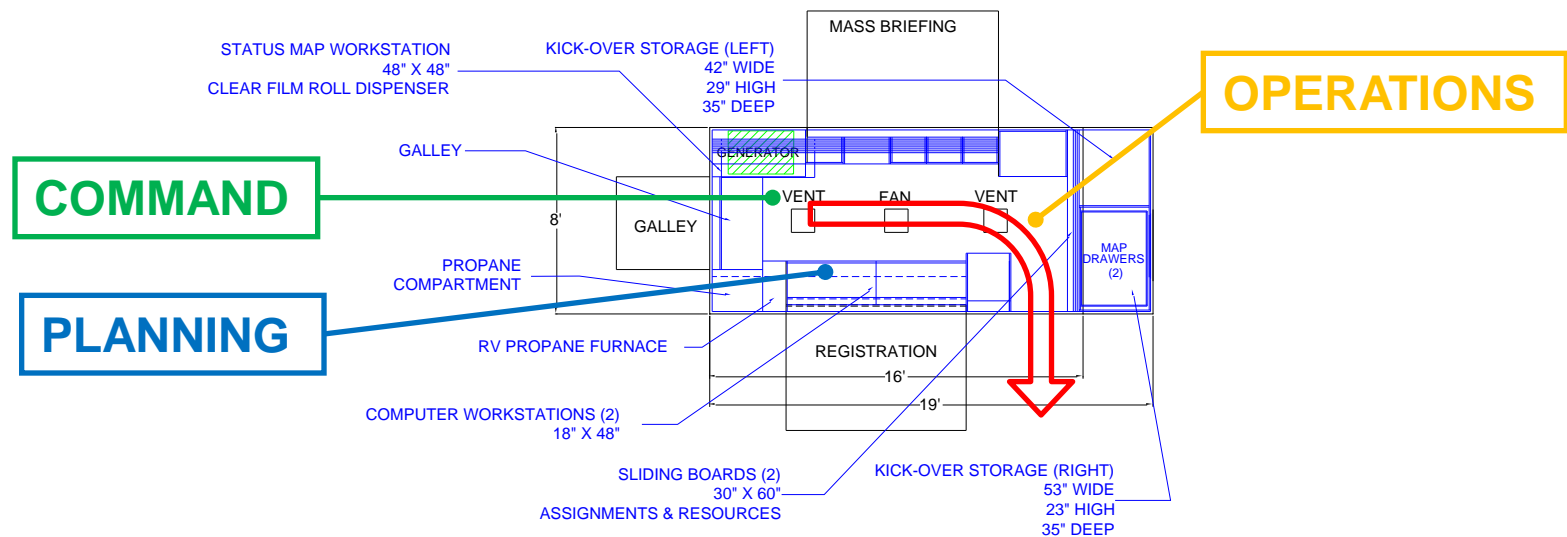




- Over 14 years (In-service July 2001)
- Estimated responses to over **500** incidents (Including Alexis Creek, Merrit, Okanagan Connector & Sechelt)

# DESIGN PHILOSOPHY

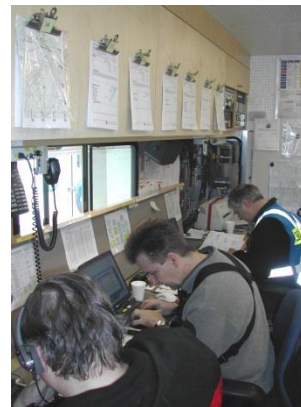
- FORM FOLLOWS FUNCTION – ICS ROLES





# DESIGN PHILOSOPHY

- FULL USE OF ALL SURFACES (INSIDE AND OUT)



# DESIGN PHILOSOPHY

- APPLICATION – OFF-ROAD/AREA OF OPERATION ETC.

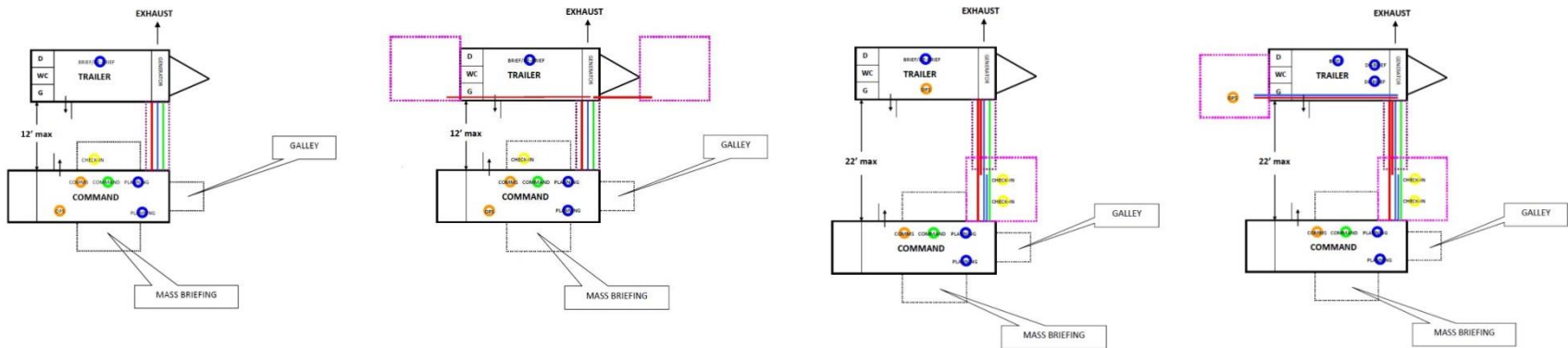


# DESIGN PHILOSOPHY

- SPEED OF SET UP

## COMMAND VEHICLE

Under 5 minutes from arriving on site to all systems/software ready for input, using only one person





# DESIGN PHILOSOPHY

- ABILITY TO UPGRADE/EXPAND/IMPROVE (ELECTRONICS, COMMUNICATIONS ETC.)





# DESIGN PHILOSOPHY

- SIZE

MAX 8' 6" WIDTH (LEGAL)

7' (MINIMUM) INTERIOR HEIGHT

LOW AS POSSIBLE (UNDER 12')

LENGTH APPROPRIATE FOR AREA OF ACCESS

ABILITY TO TOW (REAR AXLE TO REAR OF TRUCK BODY)

PROJECTIONS (MUST BE PROTECTED)

**FORD F550:**

UP TO 19,500lbs GVW (26,000lbs GCVW)

200.8" WB PROVIDES 16' BOX LENGTH (120" CA) WITH HITCH (CLASS IV)

V10 6.8L GAS 4X4 AUTO (VERY EASY TO DRIVE)

IDEAL PLATFORM HEIGHT (36-40")

UPFITTER SWITCHES

COST APPROX \$50K

# DESIGN PHILOSOPHY

- ERGONOMICS

CORRECT KEYBOARD HEIGHT (26")

ADJUSTABLE CHAIRS

APPROPRIATE LIGHTING

# DESIGN PHILOSOPHY

- DURABILITY



# DESIGN PHILOSOPHY

- POWER/UTILITIES



HONDA 6Kw



ONAN 7Kw



BLUE SEA SYSTEMS PANELS  
HAMMOND RACKS  
SAMLEX AMERICA DC POWER  
SUPPLIES



MARINCO POWER  
CABLES

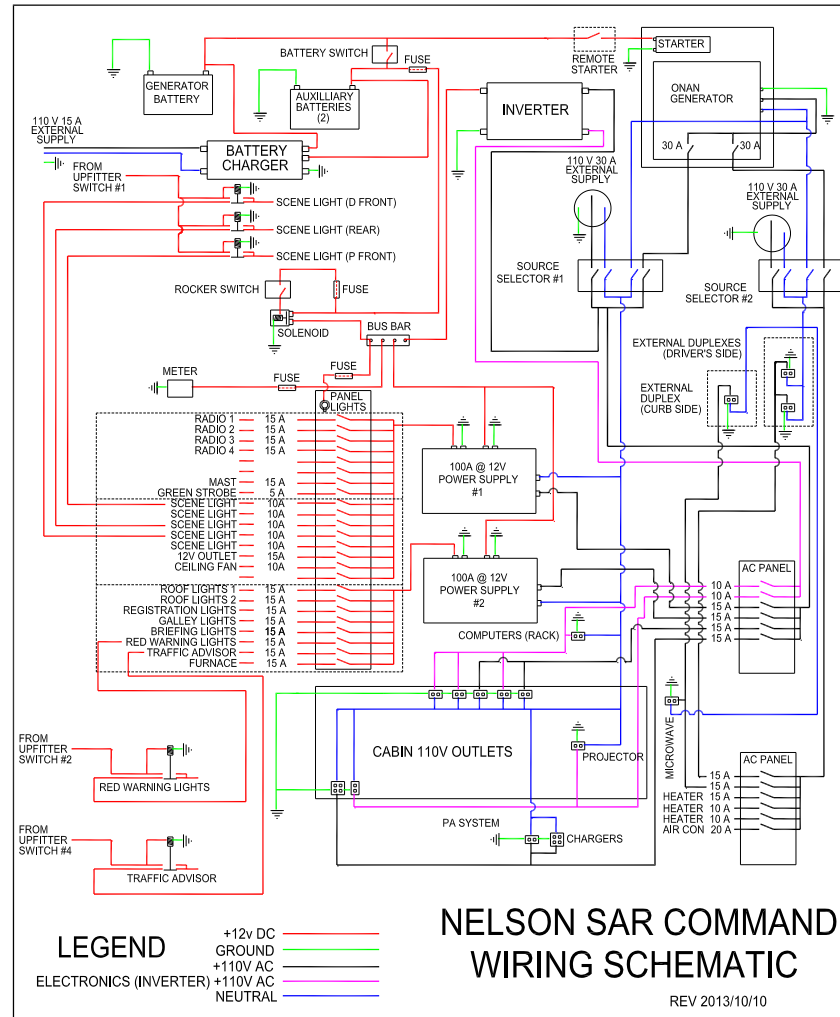


WIREMOLD  
DUCTING



# DESIGN PHILOSOPHY

- POWER/UTILITIES



# DESIGN PHILOSOPHY

- POWER/UTILITIES



BASEBOARD HEATERS UNDER WORKSTATIONS

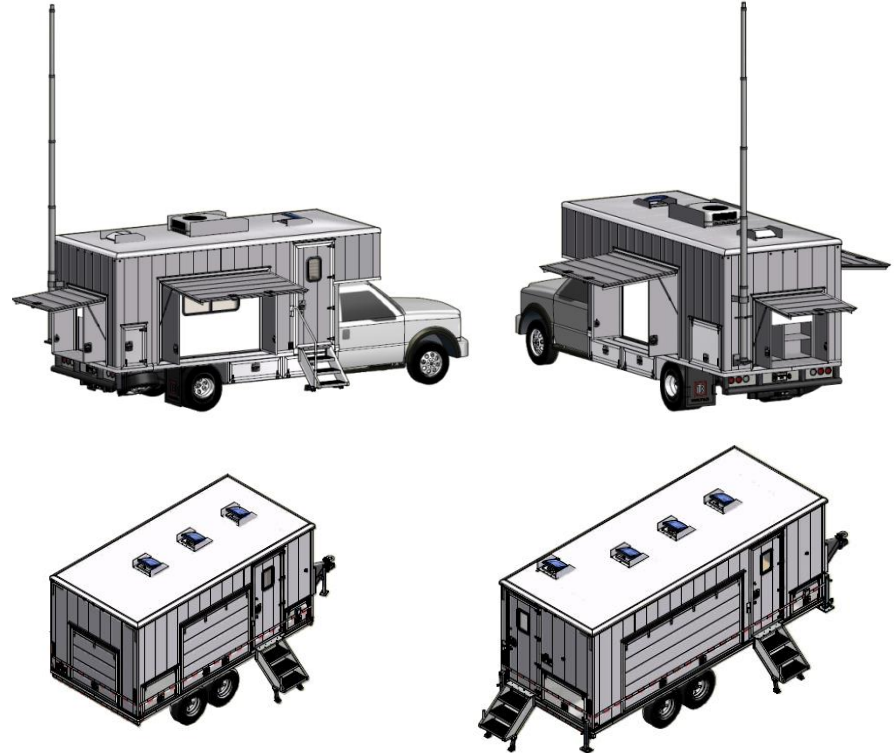


PROPANE RV FURNACE

# WHY ITB?



## EASE OF CUSTOMIZATION



# WHY ITB?



INTERCONTINENTAL  
TRUCK BODY

## DURABILITY



KENT HARRISON SAR  
ITB RESCUE TRUCK  
BODY 1993



SAME BODY SOLD TO  
LOGAN LAKE SAR IN  
2007



LOGGING ROAD ACCIDENT 1999 – ENTIRE CAB REPLACED.  
ITB BODY HAD A FEW SCRATCHES ON THE KICK-OVER



# WHY ITB?



INTERCONTINENTAL  
TRUCK BODY

BCSARA TYPE 1a  
COMMAND VEHICLE



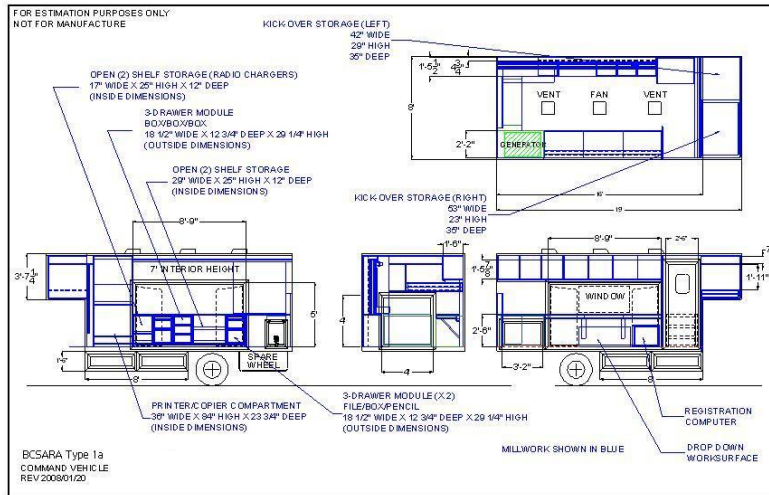
BCSARA TYPE 1  
COMMAND TRAILER



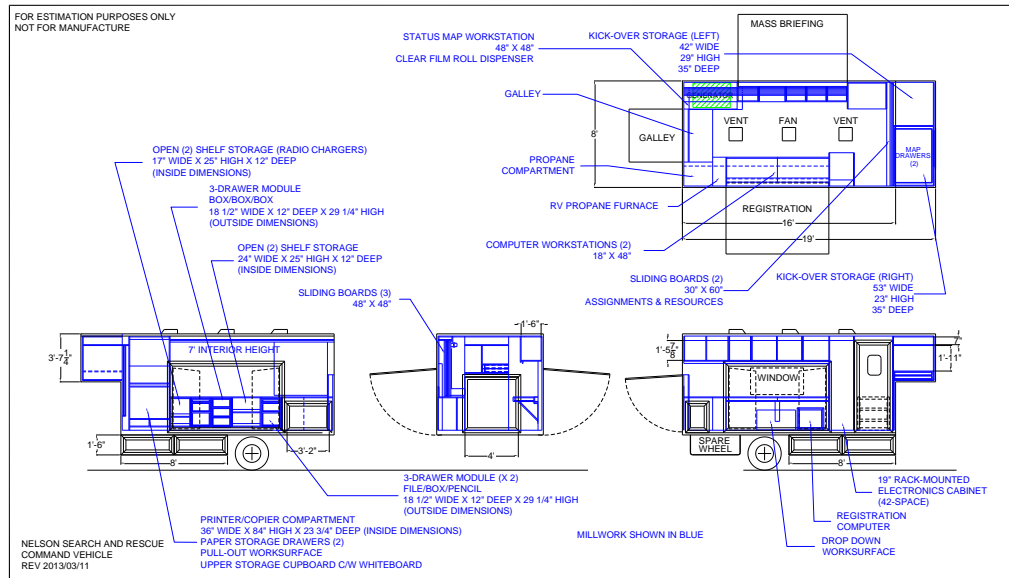
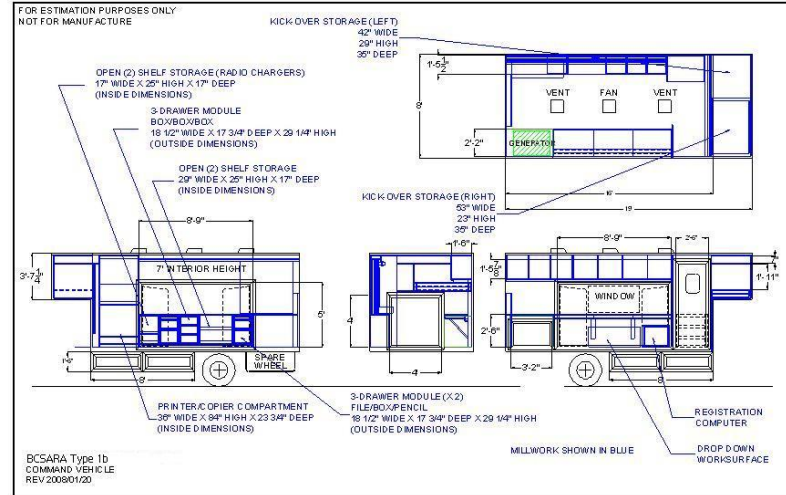
BCSARA TYPE 2  
COMMAND TRAILER



## BCSARA TYPE 1a COMMAND VEHICLE



## BCSARA TYPE 1b COMMAND VEHICLE







## RESCUE/COMMAND VEHICLE REPLACEMENT

FOR ESTIMATION PURPOSES ONLY  
NOT FOR MANUFACTURE

**KICK-OVER STORAGE (LEFT)**  
47" WIDE  
20" HIGH  
30" DEEP

**OPEN (2) SHELF STORAGE (RADIO CHARGERS)**  
17" WIDE X 26" HIGH X 12" DEEP  
(INSIDE DIMENSIONS)

**3-DRAWER MODULE BOX/BENCHTOP**  
18 1/2" WIDE X 12 3/4" DEEP X 29 1/4" HIGH  
(OUTSIDE DIMENSIONS)

**OPEN (2) SHELF STORAGE**  
20" WIDE X 26" HIGH X 12" DEEP  
(INSIDE DIMENSIONS)

**KICK-OVER STORAGE (RIGHT)**  
53" WIDE  
23" HIGH  
30" DEEP

**WINDOOR HEIGHT**

**SPARE TIRE**

**PRINTED/COPHER COMPARTMENT**  
30" WIDE X 6 1/2" HIGH X 23 3/4" DEEP  
(INSIDE DIMENSIONS)

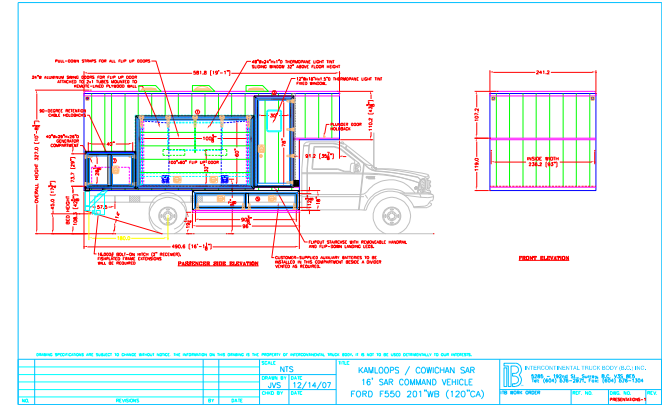
**3-DRAWER MODULE (X2)**  
FILE/DRAWERS:  
18 1/2" WIDE X 12 3/4" DEEP X 29 1/4" HIGH  
(OUTSIDE DIMENSIONS)

**REGISTRATION COMPUTER**

**DROP DOWN WORKSURFACE**

MILLWORK SHOWN IN BLUE

COWICHAN SEARCH AND RESCUE  
COMMAND VEHICLE  
REV 2008/01/20











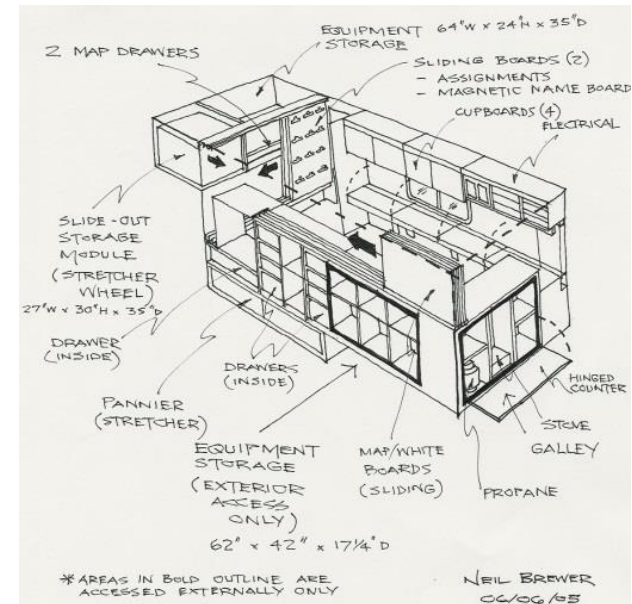
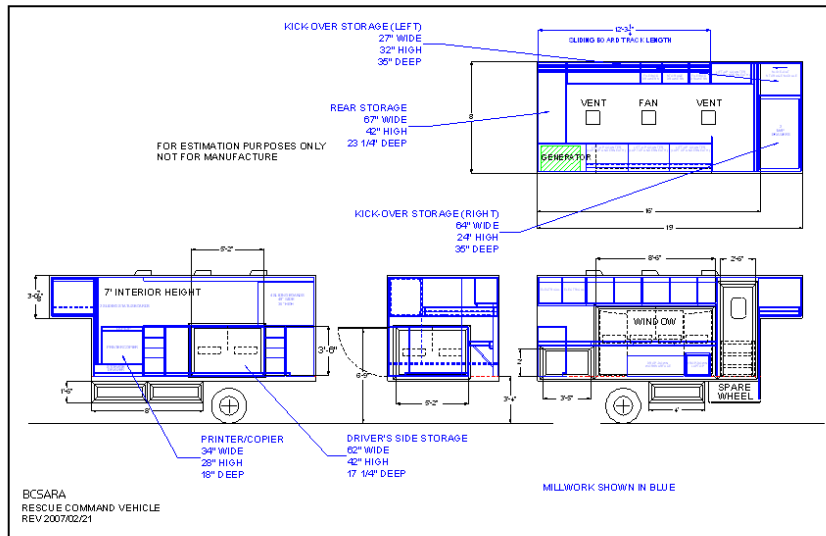


## NELSON SAR COMMAND

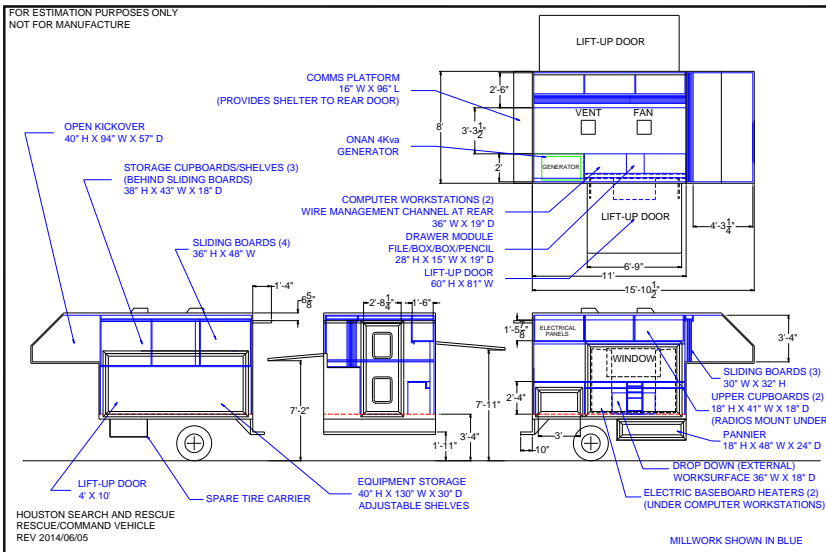




## BCSARA TYPE 1 RESCUE/COMMAND VEHICLE



## BCSARA TYPE 2 RESCUE/COMMAND VEHICLE

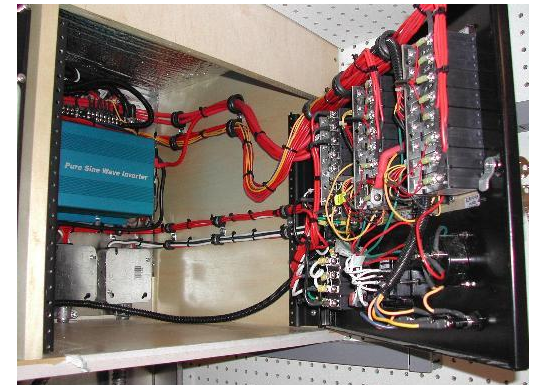
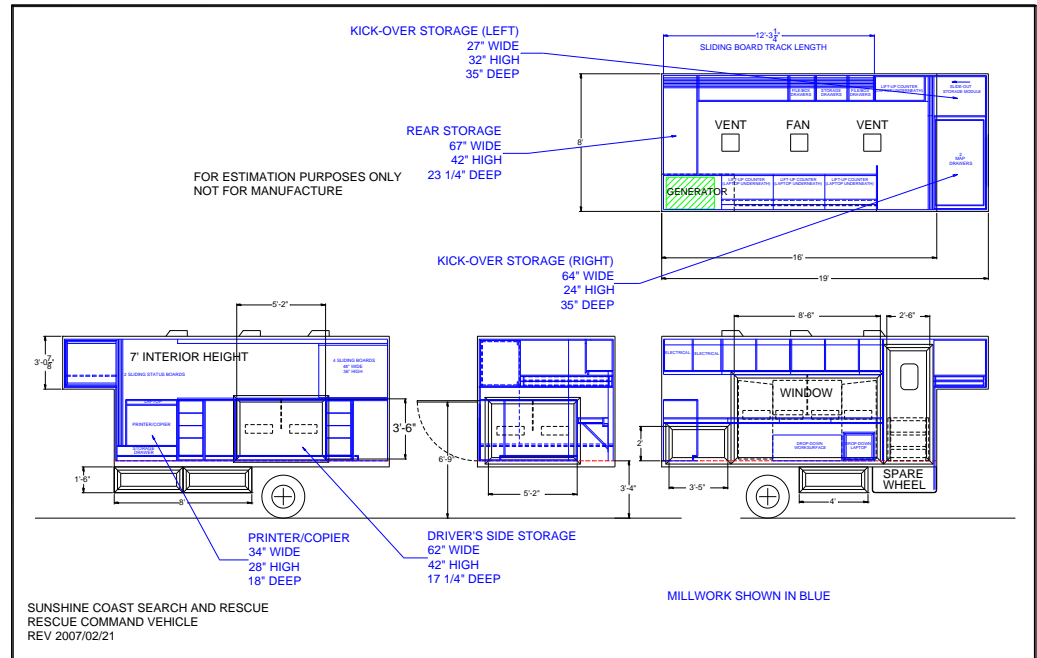




# SUNSHINE COAST SEARCH AND RESCUE

## FUNDING PROPOSAL RESPONSE VEHICLE MILLWORK AND ELECTRICAL

August 2006











Houston Search and Rescue  
Primary Response Vehicle  
Funding Proposal



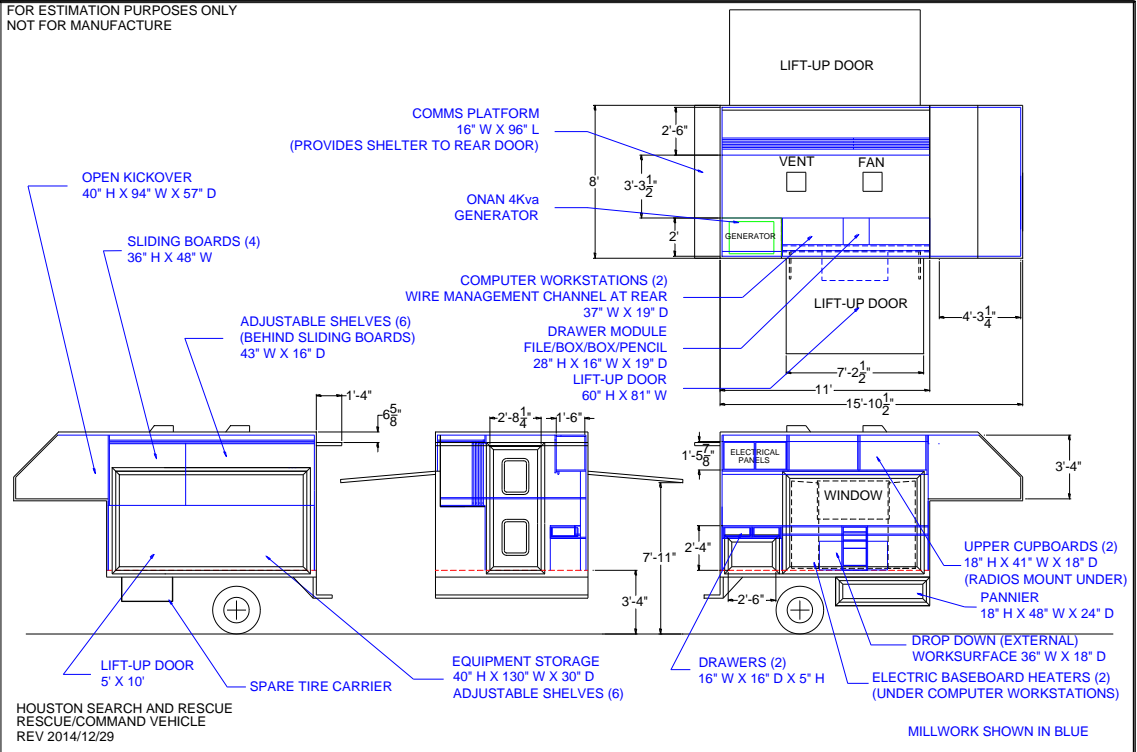
Andy Muma  
Project Lead  
250.945.2668  
amuma.andy@gmail.com

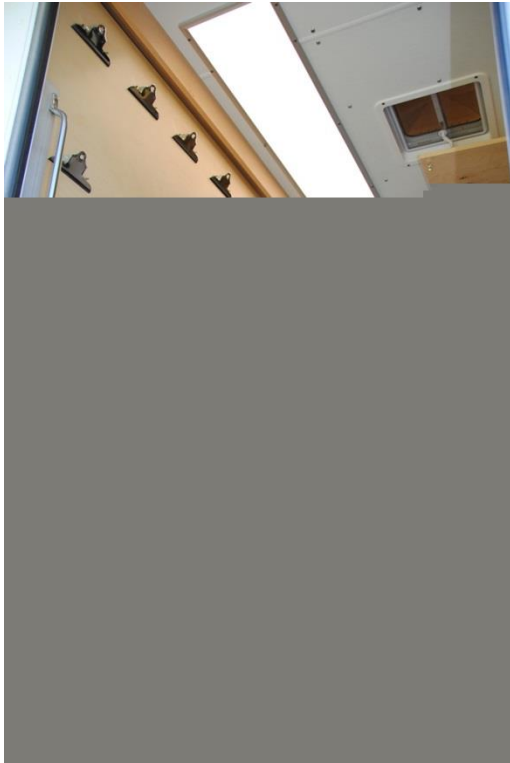
Frank McDonald  
President  
250.945.7030  
rundog5@telus.net

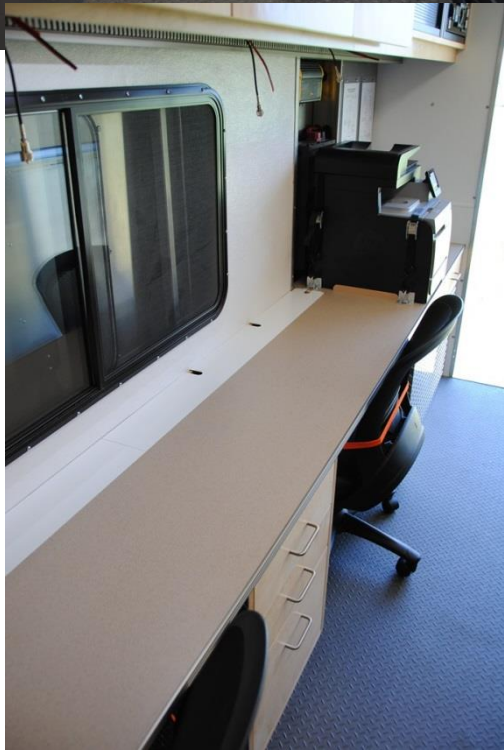
## BCSARA TYPE 2 RESCUE/COMMAND VEHICLE



FOR ESTIMATION PURPOSES ONLY  
NOT FOR MANUFACTURE

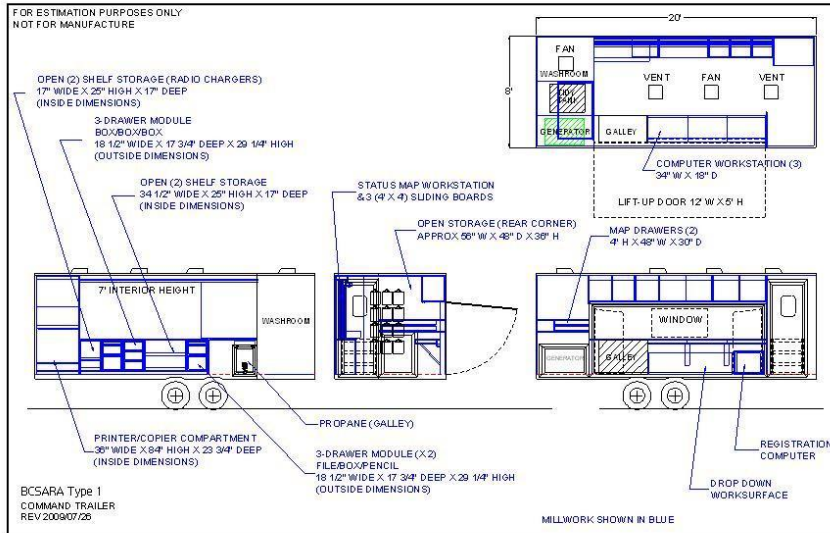




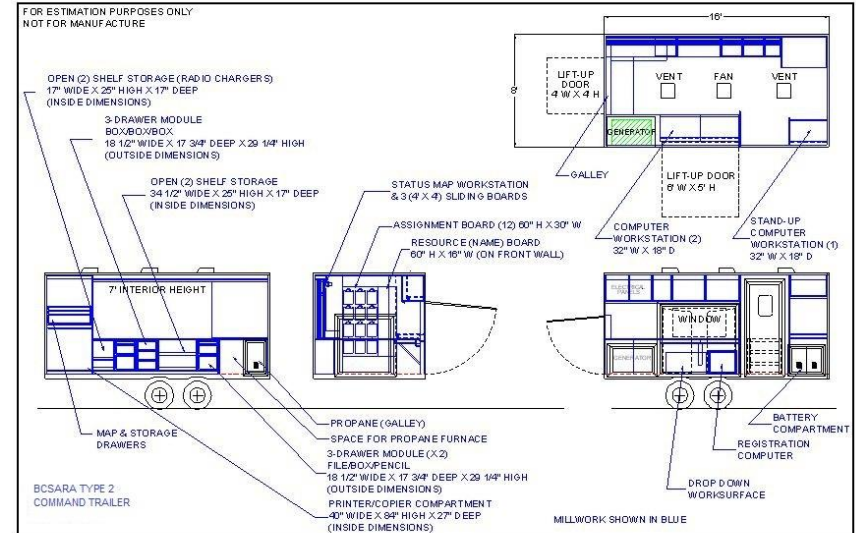




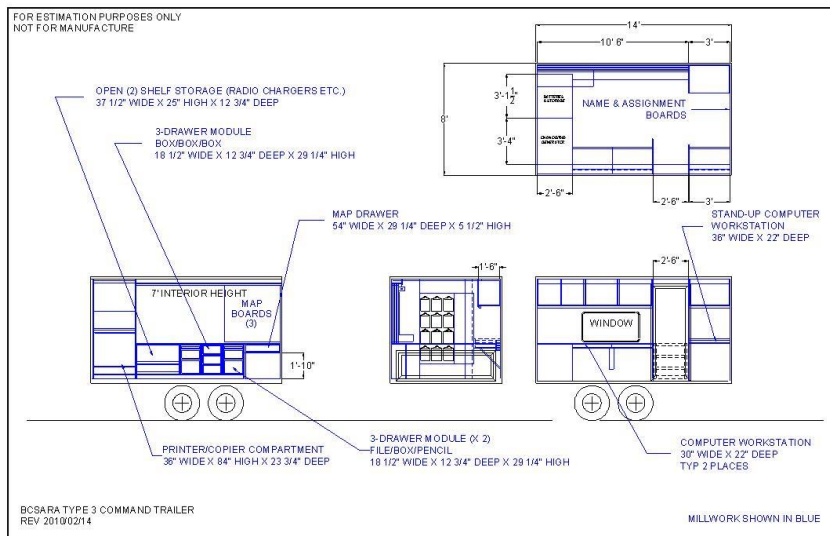
## BCSARA TYPE 1 COMMAND TRAILER



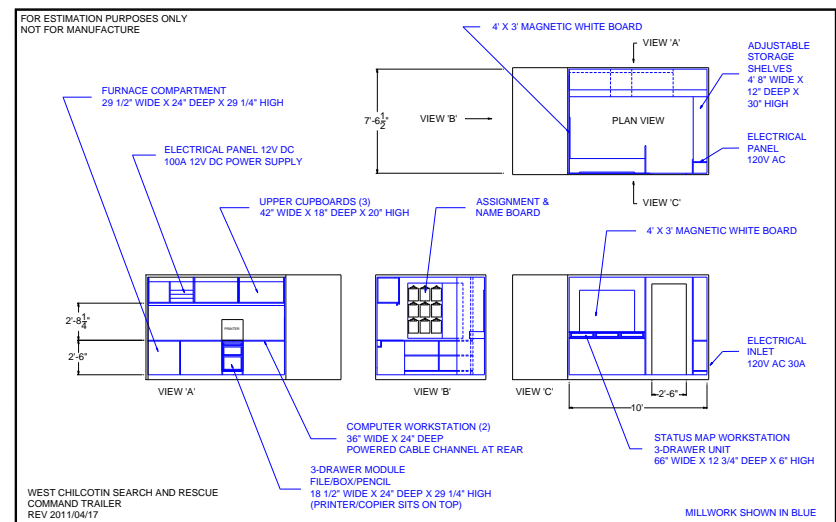
## BCSARA TYPE 2 COMMAND TRAILER



## BCSARA TYPE 3 COMMAND TRAILER

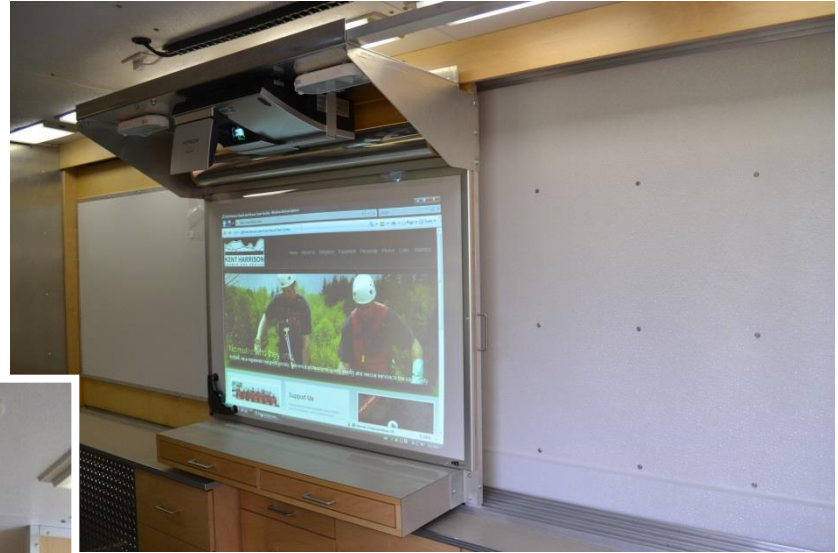


## COMPACT COMMAND/EQUIPMENT TRAILER





## BCSARA TYPE 1 COMMAND TRAILER



## HOPE SAR COMMAND

# BCSARA TYPE 2 COMMAND TRAILER



## WELLS GREY SAR COMMAND





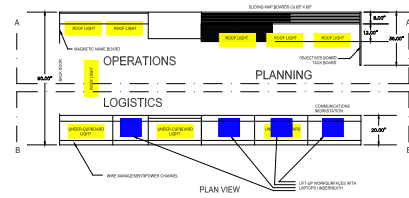
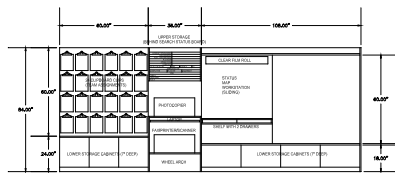








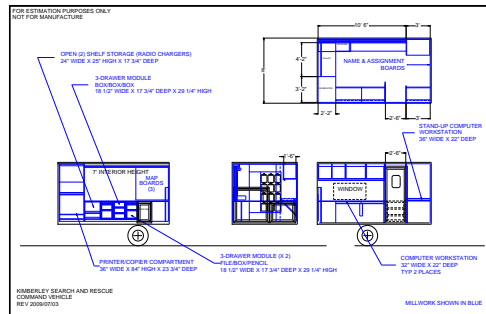
**WEST CHILCOTIN SAR  
COMMAND**











## KIMBERLEY SEARCH AND RESCUE



## FUNDING PROPOSAL COMMAND AND RESPONSE VEHICLE UPGRADING

August 2008





**BEFORE**



**BEFORE**





**BEFORE**



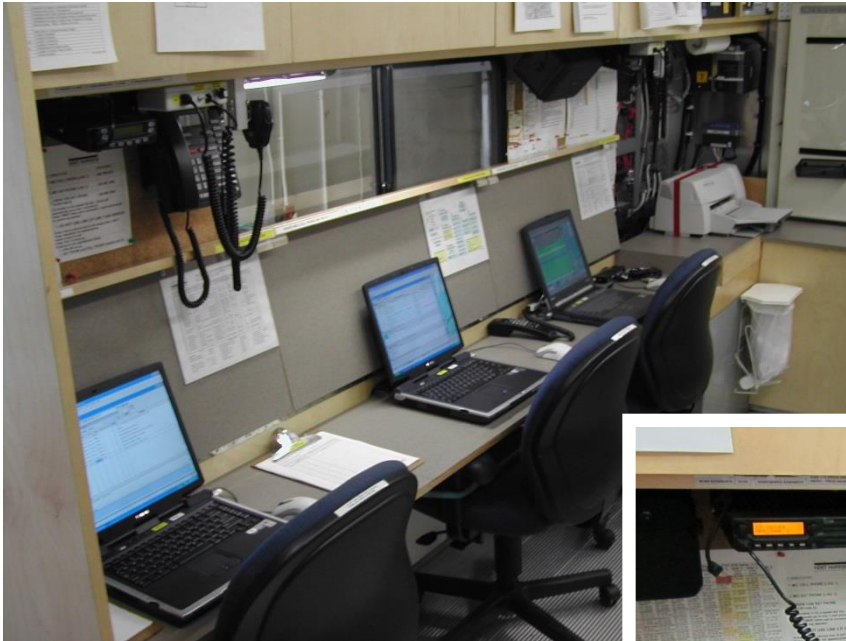




**BEFORE**

# UPGRADING

CONVERTING FROM LAPTOPS TO  
RACK-MOUNTED COMPUTERS







UPGRADING SLIDING BOARDS  
AND INSTALLATION OF AN  
ULTRA SHORT-THROW  
PROJECTOR





INSTALLATION OF A ZETRON  
4010R CONSOLE AND HUGHES  
9350 BGAN SATELLITE  
TRANSCEIVER

# GUEST APPEARANCES . . . .



# CONTACT INFO

**Neil Brewer**

H 604-796-3573

C 604-795-0267

[brewernj@telus.net](mailto:brewernj@telus.net)